

Topic: Trees (National Tree Week)

Year 3,4,5

Linked to Science

National Tree Week is the UK’s largest annual tree celebration, marking the start of the winter tree planting season (November to March each year). Each year group will spend this week learning how fundamental trees are to our lives and become involved in planting new trees and various projects.

**Prior knowledge**

- What National Tree Week.
- Names of at least 3 types of leaf and match them to the tree.
- Know a tree has a leaf, seed or nut.
- Be able to state the difference between deciduous and evergreen trees.
- The purpose of trees.

**What I will know**

- Names of at least 6 types of leaf and match them to the tree (from the list below)
- Identify and know a tree has a leaf, seed or nut.
- Know the national tree of England.
- Understand why trees are important.
- How trees help flood protection.
- How National Tree Week started.
- How to find out the age of a tree.

**Key knowledge I need to understand**

- **English Oak** – the ruling majesty of the woods, the wise old English Oak holds a special place in our culture, history and hearts. It supports more life than any other native tree species in the UK; even its fallen leaves support biodiversity. English Oak is so common it has assumed the status of a national emblem.
- A mature English Oak tree is home to over **284 species of insect** alone! It also supports many other species.
- **Why are trees important in our life?** Trees are the pillars for sustaining life on earth. Trees consume carbon dioxide and emit oxygen through photosynthesis. By binding the soil with their roots, they also assist in reducing soil erosion. Trees absorb atmospheric carbon and store it in their wood and bark, thus slowing the rate of global warming.
- **Dutch Elm disease** – in 1973, there was a big problem with a disease called **Dutch Elm disease**, which was killing lots of elm trees around the UK. In response, a campaign was started by Sydney Chapman and Peter Walker, two members of parliament who thought something needed to be done.

**Broad-leaved/Deciduous**

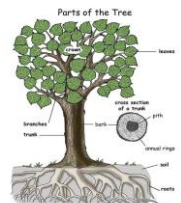
- English Oak
- Sycamore
- Chestnut
- Beech
- Ash
- Hazel
- Alder
- Maple
- Elder
- Silver Birch

**Coniferous/Evergreen**

- Leyland Cypress
- Scots Pine
- Yew
- Holly
- Holm Oak

**How I will investigate**

- Tree/leaf/twig identification sheets (nature detective resources)
- Explore and investigate in the forest school grounds
- Learn how to estimate a tree’s height through your legs
- Tree drawings
- Knowing your trees poster
- Scavenger hunt
- My street tree activity (Y5)



- Label parts of a tree